

Reciprocal News

Helping to Manage Your Risk

The MEARIE Group's Reciprocal Newsletter

A publication designed for the benefit of Ontario's Electricity Industry.

Have Feedback?

Please let us know what you think about this publication. Email us with your comments at gdurie@mearie.ca

Claims Cause Code CC- Conductor Clearance

The historical study of MEARIE Liability losses for the policy period 1998 to 2006 has revealed increasing trends for both the severity [amount of dollars paid] and frequency [number of incidents] related to Conductor Clearance incidents. The following charts on page 2 show this trending.

So what can be done to ensure these trends reverse ensuring fewer incidents and lower dollar losses? For all new construction and replacement installations follow best practices and industry standards. ESA Reg 22/04 provides for audits that include inspections, testing and preventive maintenance.

These annual audits include existing transmission and distribution systems not just your new or retrofit construction.

But what about in between or daily audits? You should regularly perform a visual inspection of your transmission and distribution system to locate low hanging lines that could be a concern.

How often do you visually inspect your lines? Would regular daily visual inspections potentially reduce the number of incidents? Don't think you have enough staff or time to inspect? Think again!

Continued on next page



The results of downed wires can be catastrophic. Here, a dump truck pulled down low hanging conductors which resulted in an extensive blackout period for tenants of an industrial park and the potential environmental clean-up.

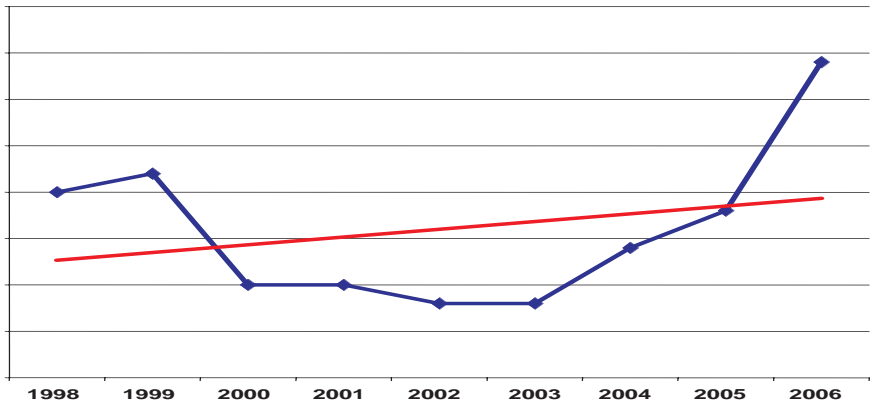


Claims Cause Code CC- Conductor Clearance

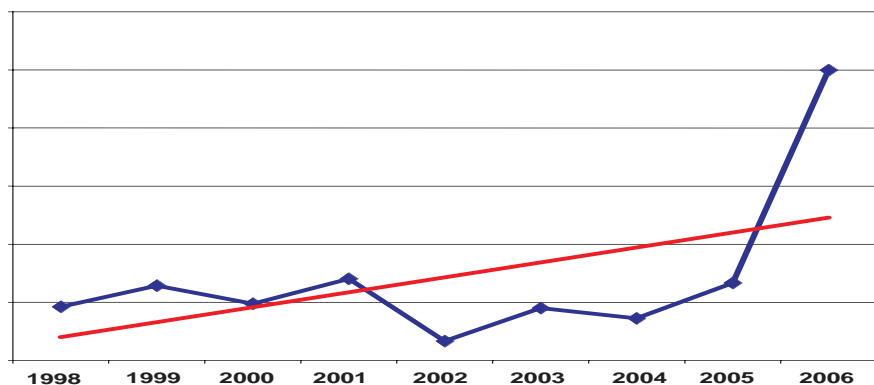
If your LDC were to make Risk Management a part of every employee's daily routine, think of the benefits you could gain. Encourage your employees to be the eyes and ears of your LDC for anything that could be a hazard to the public, including low hanging conductors, and to report it. No matter which department a staff member works in, encourage them to be aware of anything that could be a hazard to the public or result in a claim against your LDC. If it is a potential hazard or exposure to your LDC, by reporting it, an investigation and corrective action may be taken before an incident occurs.

If you are interested in implementing a self inspection program, making Risk Management a part of your employees every day activities or learning more about how your employees can become your greatest public safety resource, please contact Gary Durie, Risk Analyst, Underwriting and Risk Services at MEARIE. (905) 265-5355, gdurie@mearie.ca or (800) 668-9979.

CC - Inadequate Conductor Clearance - Frequency



CC Inadequate Conductor Clearance - Severity



Don't miss the Insurance and Risk Management Conference at Deerhurst Resort

June 24-26, 2008

Register before May 27th and save more than \$100 in registration fees and be eligible for the Early Bird draw for a 2-night stay at Deerhurst Resort.

[Click here to register](#)

Featured Topics Include:

- Risk Management Fundamentals
- Business Continuity Planning
- Joint and Several Liability
- and much more...

The MEARIE Group's Reciprocal News is an electronic publication intended for subscribers of The MEARIE Group's Property and Casualty Insurance programs. It is published on a periodic basis and is intended for information purposes only. For further information, visit www.mearie.ca or contact Gary Durie, Risk Analyst, Underwriting and Risk Services at gdurie@mearie.ca.

The MEARIE Group, 1100 - 3700 Steeles Ave West, Vaughan, ON, L4L 8K8 T:905-265-5300 or 1-800-668-9979
F: 905-265-5301, Email: mearie@mearie.ca web site: www.mearie.ca